



## INTRODUCTION

The sport of Working Equitation was introduced into Australia in 2007 and since then the sport has grown significantly. Australian National Working Equitation Limited (**ANWEL**) was established in February 2016 and in August 2016 it signed a Protocol with the World Association Working Equitation (**WAVE**) which is the sole international authority for organising working equitation for current and future country members. ANWEL has been appointed by WAVE as the only Official Accredited Agent for the promotion of working equitation in Australia.

It is the mission of ANWEL to:

- promote and develop the discipline of working equitation throughout Australia
- uphold the ideals and the philosophies of classical dressage and traditional horsemanship whilst incorporating the heritage of Australian bush culture and station horses
- offer a nurturing and caring environment for riders, regardless of breed of horse.

ANWEL places an emphasis on harmony between horse and rider and the quality of training and riding. ANWEL demands humane, correct and progressive training and conditioning of the horse resulting in physical and mental soundness, while also staying true to the sport.

The ANWEL Official Rulebook has been created with Australian riders and working traditions in mind and is as closely aligned as possible with WAVE's rules. These rules provide a foundation for Australian riders to be competitive on the international arena.

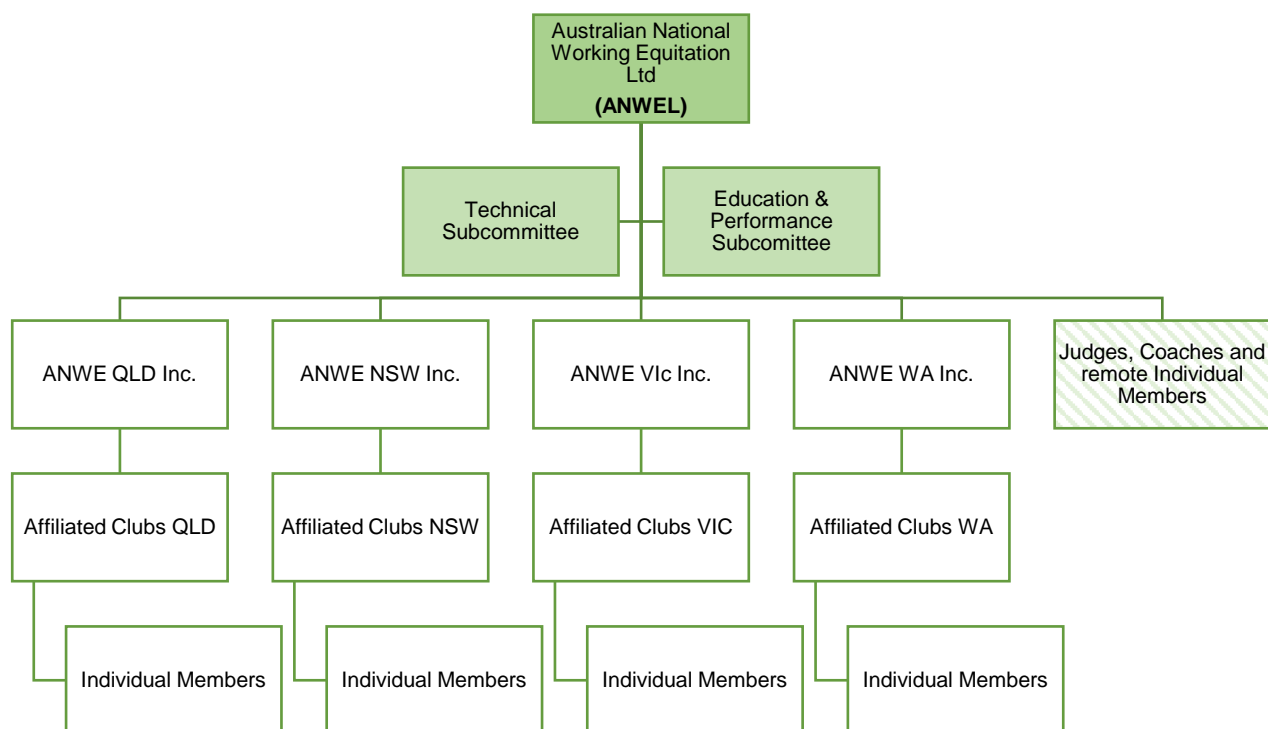
## PURPOSE

The purpose of this document is to provide an overview of ANWEL organisation and member structure.

### References:

- ANWEL Constitution
- ANWEL Board Charter
- ANWEL Memorandums of Understanding (State / Club Affiliation)
- ANWEL Annual State Affiliation Renewal Form
- ANWEL Club Affiliation EOI and Annual Renewal Form

# ORGANISATIONAL STRUCTURE



**Figure 1: ANWEL Structure**

## ANWEL

ANWEL is the national governing body for the promotion and administration of the sport of Working Equitation in Australia and is the sole Official Accredited Agent of WAVE in Australia.

ANWEL is governed by a Board of Directors who are elected by its member State Affiliates.

The Board is supported by two subcommittees:

- Technical Subcommittee – purpose is to review and update of the ANWEL Official Rule Book
- Education and Performance Subcommittee - purpose is to further develop the accreditation of Judges and Coaches as well as promote the competition environment and enhance rider performance.

## **Role**

Refer to *ANWEL Board Charter* for further information on the role and purpose of the ANWEL Board.

## **Legal Structure**

ANWEL is a company limited by guarantee and is registered by the Australian Securities and Investments Commission (ASIC). Its key governing document is the ANWEL constitution which complies with requirements under the Corporations Act 2001.

ANWEL is affiliated with Equestrian Australia (EA) and is obliged to meet EA requirements for insurance purposes.

## **STATE AFFILIATES**

At present there are four (4) State Associations who are each affiliated with ANWEL and are responsible for the growth and development of Working Equitation in their individual States:

- Australian National Working Equitation NSW Inc.
- Australian National Working Equitation – VIC Inc.
- Australian National Working Equitation – QLD Inc.
- Australian National Working Equitation – WA Inc.

Each State Association is governed by a Committee which comprises a president, vice-president, treasurer and secretary and up to three ordinary committee members all of whom are appointed at the Annual General Meeting of the State Association.

## **Legal Structure**

State Associations must be a legal entity, i.e. incorporated in accordance with Australian and relevant State legislation. State Associations are required to have a constitution which is consistent with the Constitution of ANWEL and approved by ANWEL.

All State Associations are to comply with relevant State and local legislation and if affiliated with EA, with EA directives and requirements.

State Associations are required to maintain adequate insurance related to their risk profile.

## **Memorandum of Understanding**

State affiliation with ANWEL is achieved through application and a formal Memorandum of Understanding between ANWEL and the State Association.

The Memorandum of Understanding is reviewed annually. Any amendments to the

Memorandum of Understanding is communicated to all Parties for consultation and formal agreement.

On an annual basis the affiliated State Association is required to apply for renewal using the *State Affiliate Renewal Form*. Annual fees are determined by ANWEL.

## **Role**

The object of State Affiliation is to promote and administer working equitation. This includes:

- abiding by the ANWEL Memorandum of Understanding agreement
- establishing, approving, developing and administering ANWE affiliated clubs in that State
- implementing ANWEL strategic direction, policies and rules
- promoting education and performance initiatives
- upholding good governance and an inclusive culture
- supporting a competitive environment in accordance with the ANWEL Official Rule book
- ensuring the health, safety and wellbeing of working equitation riders, their horses and all livestock.

## **AFFILIATED CLUBS**

Membership of Affiliated Clubs is open to all who wish to participate in the sport of working equitation. ANWE clubs are the grass roots of working equitation in Australia and have an important role in growing the sport.

Each Affiliated Club are to work co-operatively with the relevant State Association and ANWEL to develop, support, promote and grow the sport of working equitation in Australia.

### **Legal Structure**

ANWE Affiliated Clubs must be a legal entity, i.e. incorporated in accordance with Australian and relevant State legislation. Club Affiliates are required to have a constitution with a copy provided to the ANWE State Association.

All Clubs are to comply with relevant State and local legislation and if also affiliated with Equestrian Australian (EA) with EA directives and requirements.

Affiliated Clubs are required to maintain adequate insurance related to their risk profile.

### **Memorandum of Understanding**

Club Affiliation is achieved through application to the relevant State Association using the *ANWE Club EOI & Annual Renewal Form*.

Following application approval by the State, a formal Memorandum of Understanding between the Club, ANWE State Association and ANWEL is completed. The Memorandum of Understanding is approved by State Association

and lodged with ANWEL for final endorsement.

The Memorandum of Understanding is reviewed annually. Any amendments to the Memorandum of Understanding is communicated to all Parties for consultation and formal agreement.

On an annual basis the Affiliated Club is required to apply for renewal using the *ANWE Club EOI & Annual Renewal Form*. Annual fees are determined by ANWEL.

## **Role**

Affiliated Clubs are to promote and educate working equitation within their equestrian community and expand ANWEL membership through:

- abiding by the ANWEL Memorandum of Understanding agreement and all other legal requirements
- planning and delivering working equitation events such as -
  - competitions in accordance with ANWEL Official Rule Book
  - training days and clinics
  - judge accreditation opportunities
- ensuring all members of an Affiliated Club have current registration with ANWEL
- upholding a culture of inclusiveness, fairness and good sportsmanship
- ensuring the health, safety and wellbeing of working equitation riders and their horses.

## **ANWEL INDIVIDUAL MEMBERSHIPS**

### **ANWEL Riders**

Applications for membership are completed electronically on Nominate.

Riders must not enter into or compete in any working equitation training day, competition or other event organised by ANWEL, the State Association or Affiliated Club unless they have paid their rider's levies up to date (as at the date of entry and the date of the relevant event) and quoted their rider's levy number to the organising committee of the training day, competition or other event.

### **ANWEL Judges and Coaches**

All Accredited ANWEL Judges and Coaches are required to be a current registered ANWEL member.

### **Annual Membership Renewal**

Annual membership levy fees will be determined by ANWEL. A reminder will be sent to members via Nominate.